

## Welcome!

As a University of Kentucky Voluntary Faculty member, you may now access the UK Medical Center Library's (UK MCL) **electronic resources**. Most are only a click away from the library's home page. <http://libraries.uky.edu/mcl> By bookmarking this site on your web browser, it will always be handy when you need it.

This benefit of your faculty membership will provide information support for you as a preceptor. The library provides a wide variety of information sources through its website including textbooks, journal articles, databases and systematic reviews. This pamphlet will show you where to begin.

## And remember...



- When accessing electronic resources, you will need to enter your **Link Blue** ID and password when prompted by the proxy server. Don't have a Link Blue Account? Contact Emily Chambers at the UK Voluntary Faculty Program Office at 859-323-8013.
- When registering to use our **ILLiad** Interlibrary Loan Service, be sure to identify yourself as "UKMC Voluntary Faculty" in the Status field.
- When checking out books for the first time from the UK MCL, see our Circulation staff to be entered into the **InfoKat Discovery** system and receive a library barcode.

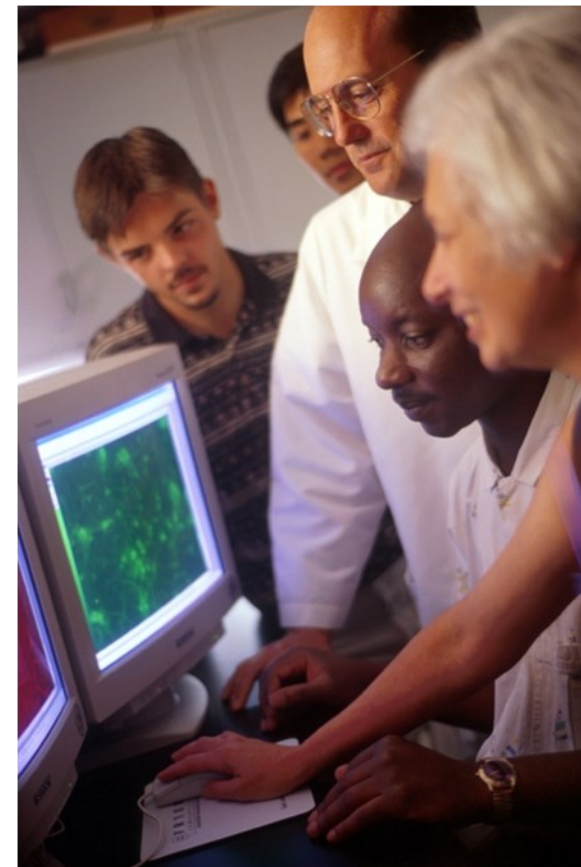
## UpToDate Access

UpToDate is considered a point-of-need resource; i.e., when an immediate question needs an answer. It was acquired by UKHealthCare for health professionals. To abide by the publisher's licensing agreement, extra security is required. UTD can be accessed from the MCL's home [page](#) via the colorful UTD icon. You must Register first with a user name and password. Once registered, you'll receive an email confirmation. At this point, you can download the UTD app "*UptoDate Anywhere*". Login is required on campus or via the VPN every 30 to 90 days to maintain access. see

<http://libguides.uky.edu/uptodate> or "[Maintaining Access](#)"

Check us out on **Facebook!**

<http://www.facebook.com/UKMCL>



**Library Services for  
University of Kentucky  
Voluntary Faculty**



**Medical Center Library  
University of Kentucky  
800 Rose Street  
Lexington, KY 40536-0298  
(859) 323-5300 phone  
(859) 323-1040 fax  
[mclib@uky.edu](mailto:mclib@uky.edu)  
<http://libraries.uky.edu/mcl>**

## E-Journals and E-Books

To access thousands of electronic full-text biomedical journals from the UK Medical Center Library's (MCL) home page <http://libraries.uky.edu/mcl>, click on the "E-JOURNALS" tab (1) above the "SEARCH" field. Simply type in the title of the journal you wish to access. The proxy server will prompt you for your Link Blue ID and password. A very small number of journals will require an additional password which is available by contacting the Medical Center Library.

To find electronic textbooks, click on the "LIBRARY CATALOG" tab (2) above the "SEARCH" box and type in your subject or book title. From the results page, click on the "Full Text Online" link on the left margin.

## Medline, PubMed and other databases

Medline is the world's premiere index of the medical journal literature. Produced by the National Library of Medicine and updated daily, it contains over 25 million citations. **PubMed** is the version of Medline available freely to the public.



By linking to PubMed from the UK MCL's home page, you can directly link to full-text articles owned by the Medical Center Library. Click on the "DATABASES" tab (3) above the "SEARCH" box. Then click on the down arrow under "Selected Databases for Medical Center Library". Select "**PubMed.**" Additional databases include **Clinical Key**, **AccessMedicine**, and **PsycINFO**.

Two more databases available to community faculty are the evidence-based medicine resource, **Cochrane Library**, and the expert opinion product, **UpToDate**. UpToDate is available with additional clearance; see back panel of this brochure for details.

## ILLiad Interlibrary Loan Service

Occasionally you will need an item the UK MCL does not have. An option you may want to consider is the **ILLiad** Interlibrary Loan Service. To register for this service and create an ID and password, click on "INTERLIBRARY LOAN" at the top of the MCL home page (4). Then scroll down and click on the "First Time Users" link. Be sure to select "UKMC Voluntary Faculty" in the status field. Once you have created your account you may login at the following address: <https://mcilliad.uky.edu> Or you can just click on the "ILLiad (MC ILL/Document Delivery Request)" link to the right of the registration area.

## Checking out materials

Looking for a particular text? **InfoKatDiscovery**, the Library's catalog, (available by clicking on LIBRARY CATALOG) (2), will tell you if it is in our collection. In order to check out print materials, please contact our Circulation staff to be entered into the Primo System and receive a library barcode.

## Training sessions

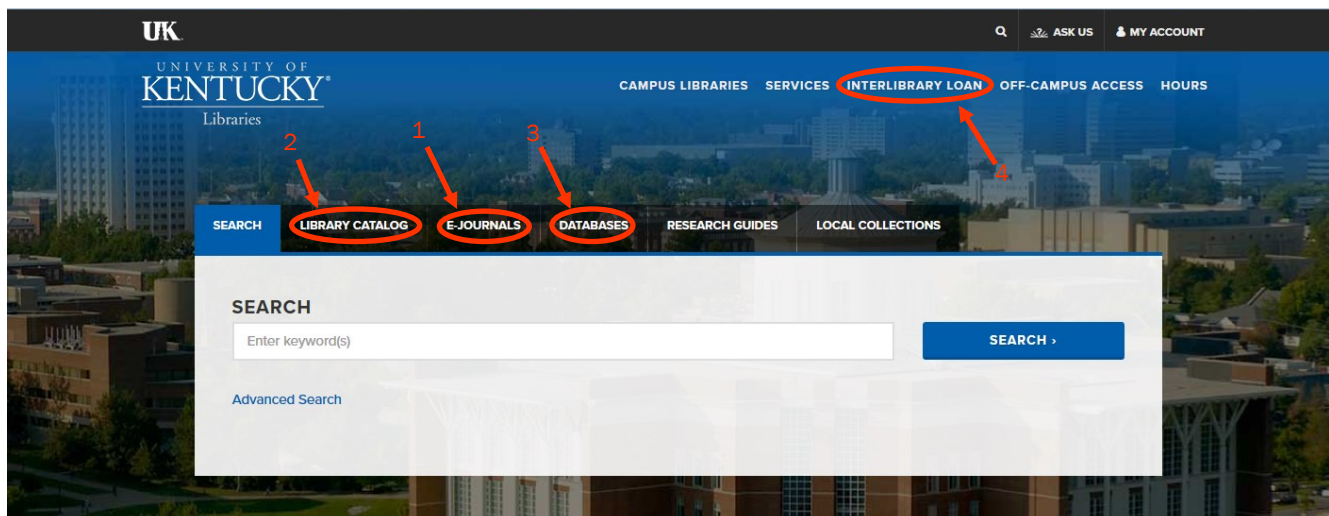
The MCL offers a variety of training opportunities on its electronic resources. To see a schedule of onsite classes and to register, from the UK MCL home page, scroll down and click on "MCL CLASSES" under "Library Links"; then scroll down for more information. Classes are free, and everyone is welcome to attend.

## Contact Us

The UK Medical Center Library is only a phone call or an email away.  
**859-323-5300**  
[mclib@uky.edu](mailto:mclib@uky.edu)

Try our **reference** service by clicking on the "Ask Us" link at the very top of our home page. Then scroll down for more information.  
<http://libraries.uky.edu/mcl>

To obtain a **Link Blue** account, contact Emily Chambers at the UK Voluntary Faculty Program  
Office: **859-323-8013** or [ukcfp@uky.edu](mailto:ukcfp@uky.edu)  
<http://ahec.med.uky.edu>  
**859-323-8018**



## MEDICAL CENTER LIBRARY

⌚ HOURS for April 4, 2016: 8:00am - Midnight

ABOUT MEDICAL CENTER LIBRARY

INTRO

BORROW

GUIDES

CONTACT